

# Langar C of E Primary School

Barnstone Road  
Langar  
Nottingham  
NG13 9HH



Head Teacher  
Mrs E J Brown

01949 860056

Dear Parents,

## **Childcare for the Children of Key Workers**

Although the school is closing at the end of today to ensure social distancing preventing the spread of Coronavirus, you will be aware that the government stated that schools would be open to provide childcare for the children of key workers. In the early hours of this morning, we received guidance of exactly who 'key workers' are. I have included details taken from the guidance – the list is quite extensive. I must stress that guidance states very clearly that **the safest place for your children to be is at home and if they can be cared for at home then they should be. Please take a common sense approach to this, as bringing your children back together in this way should be a last resort.**

**If a parent is at home or working from home, then the children should be at home.**

### **Please follow these key principles:**

- If it is at all possible for children to be at home, then they should be.
- If a child needs specialist support, is vulnerable or has a parent who is a critical worker, then childcare provision will be available for them.
- Parents should not rely for childcare upon those who are advised to be in the stringent social distancing category (such as grandparents, friends, or family members with underlying conditions or over 70 years of age).
- Parents should also do everything they can to ensure children are not mixing socially in a way which can continue to spread the virus. They should observe the same social distancing principles as adults.

It is important that you contact the school if you feel you have no alternative but to send your child to school – please phone or email [office@langar.notts.sch.uk](mailto:office@langar.notts.sch.uk) as soon as possible expressing your interest. You will then need to follow the flow chart provided and return your slip via email by 5.00pm . You will need to indicate clearly your job title and confirm that you have spoken with your employer about the possibilities of flexible working, based on your business continuity arrangements. You will also be asked to give a clear indication of the sessions you will need for your children – childcare will be provided by school staff between usual school opening and closing times. The Early Years Learning Alliance are also making decisions about the provision they can offer so await correspondence from them regarding this.

We have received information from the Local Authority indicating that schools may be asked to join forces to provide childcare hubs. Please bear in mind that following their instruction, once numbers of

children are known, your child may be directed to attend a childcare setting that is at another school. Further information will be given as and when we know.

Parents should only request a place at school if their child **cannot be cared for safely elsewhere**. We are going to be able to provide more support, for a longer period of time, the fewer children we have in school over the longer term because staffing levels within school will inevitably fluctuate due to illness and the need to self-isolate. Gavin Williamson, the Secretary of State for Education, suggested that no more than 10% of our school's usual number of children should be at school in order to help with social distancing and to reduce the spread of the COVID-19 virus which means that it may become necessary for us to prioritise cases in order to keep everybody as safe as possible.

We will need your request for childcare as soon as possible so that we can make arrangements and organise staffing. Mrs Selby has generously offered to provide school meals for children who are here and request it – please indicate this in your email. Due to the very tight timescale involved and the guidance only being received in the early hours of the morning it may mean that the childcare we provide on Monday morning may not be the solution we offer in the following weeks. The Local Authority and other local schools may need more time to organise this provision.

I know this is an awful lot of information to read and take in and as ever, if you have any questions, please call and we will see if we can answer them!

Yours sincerely,

A handwritten signature in black ink, appearing to be 'Mrs Brown', with a long horizontal stroke extending to the right.

Mrs Brown

# Critical Worker Application Form for Continued Access to School Provision during Closure

The government has released new guidance which defines those occupations that are ‘critical workers’ during this crisis. It states that:

As a country, we all need to do what we can to reduce the spread of the COVID19 virus.

That is why the government has given clear guidance on [self-isolation](#), [household isolation](#) and [social distancing](#).

And the most recent scientific advice on how to further limit the spread of COVID19 is clear. **If children can stay safely at home, they should, to limit the chance of the virus spreading.**

That is why the government has asked parents to **keep their children at home, wherever possible, and asked schools to remain open only for those children who absolutely need to attend.**

It is important to underline that schools, colleges and other educational establishments remain safe places for children. But the **fewer children making the journey to school, and the fewer children in educational settings, the lower the risk that the virus can spread and infect vulnerable individuals in wider society.**

Schools are, therefore, being asked to continue to provide care for a limited number of children - children who are vulnerable and children whose parents are critical to the Covid-19 response and cannot be safely cared for at home.

Many parents working in these critical sectors may be able to ensure their child is kept at home. **Every child who can be safely cared for at home should be.**

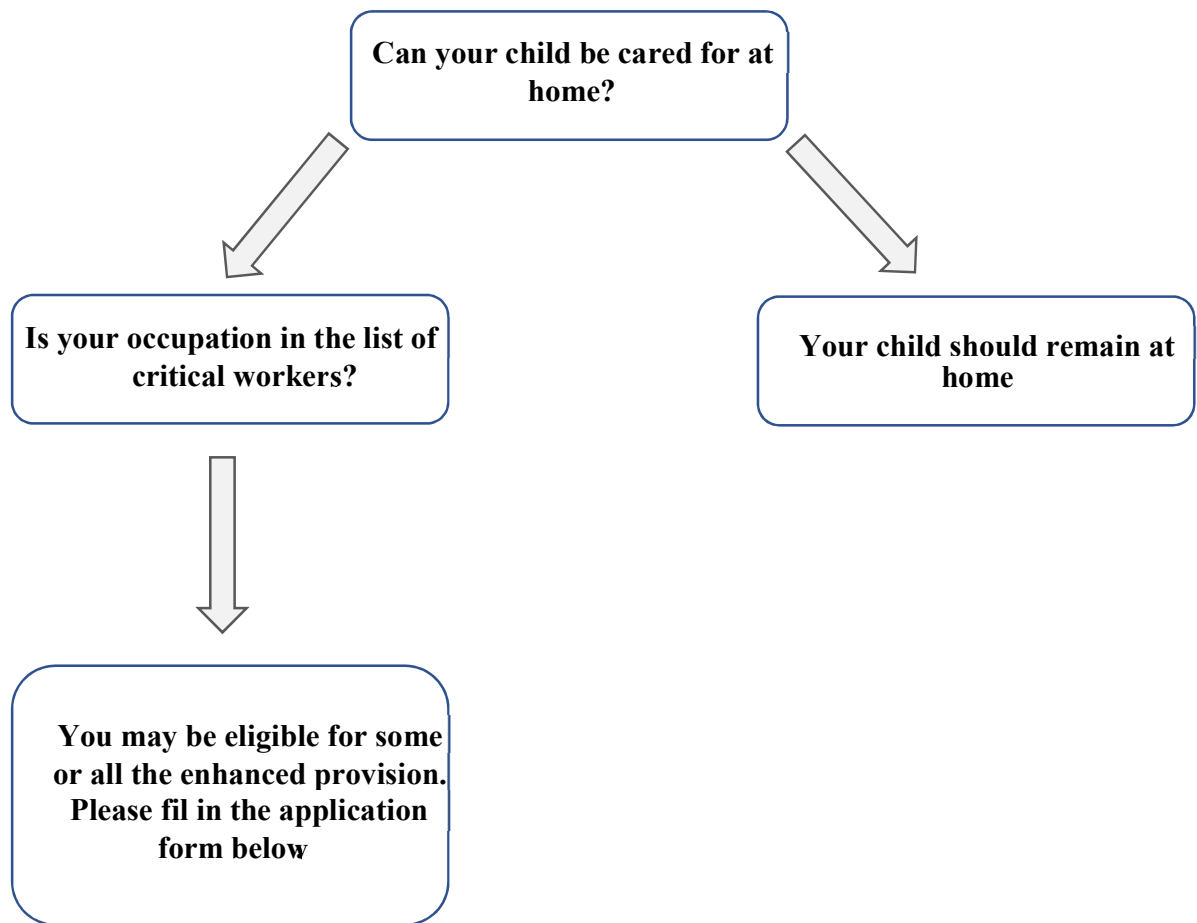
This is an offer to parents and carers and there is **no requirement for parents and carers to send their children to school if they do not need or wish to do so.**

-----  
-----  
It is very important that this access is provided for critical workers.

As such, if you think that you are eligible for this access via your employment status, please follow the flowchart below. If you qualify and wish to access this offer, please fill in the questionnaire and return it to [office@langar.notts.sch.uk](mailto:office@langar.notts.sch.uk)

**My occupation is listed below:**

- NHS staff
- Teachers and support staff
- Police and community support officers
- Prison officers and staff
- Probation officers and trainee probation officers
- LA officers and LA/NHS social workers
- Uniformed staff in fire and rescue service
- Armed forces personnel and some civilian MOD personnel (ie clinical staff, MOD police, uniformed fire and defence) and some discharge personnel
- Highway agency traffic staff
- LA environmental health officers / practitioners
- Care workers
- Food/supermarket drivers and other workers



# Application Form

Please answer all of the questions in full:

<b>1. What is your name and the name of you child/ren</b>			
<b>2. What is your job title?</b>			
<b>3. Please indicate the critical worker category that matches your role (from the list on page 2)</b>			
<b>4. Please provide the name and contact details (email and telephone number) of your line manager.</b>			
<b>5. How many hours per week are you employed in the critical worker role?</b>			
<b>6. What is your shift pattern?</b>	Monday - Tuesday - Wednesday - Thursday - Friday -		
<b>7. Are you a single parent? (if yes, go to question 9)</b>	Yes		No
<b>8. What is your partner's occupation (please state 'none' if they are unemployed).</b>			
<b>9. Are you wishing to access continued provision at the school at any point?</b>  <b>Are you expecting to access provision over the Easter Holidays?</b>	Yes		No
<b>10. Please specify which of the sessions you will need to access.</b>		<b>Morning</b>	<b>Afternoon</b>
	<b>Monday</b>		
	<b>Tuesday</b>		
	<b>Wednesday</b>		
	<b>Thursday</b>		
	<b>Friday</b>		

## **Appendix 1**

### **Key Workers – guidance for schools and local authorities**

**If your work is critical** to the COVID-19 response, or you work in one of the critical sectors listed below, and you **cannot keep your child safe at home** then your children will be prioritised for education provision:

#### **Health and social care**

This includes but is not limited to doctors, nurses, midwives, paramedics, social workers, care workers, and other frontline health and social care staff including volunteers; the support and specialist staff required to maintain the UK's health and social care sector; those working as part of the health and social care supply chain, including producers and distributors of medicines and medical and personal protective equipment.

#### **Education and childcare**

This includes nursery and teaching staff, social workers and those specialist education professionals who must remain active during the COVID-19 response to deliver this approach.

#### **Key public services**

This includes those essential to the running of the justice system, religious staff, charities and workers delivering key frontline services, those responsible for the management of the deceased, and journalists and broadcasters who are providing public service broadcasting.

#### **Local and national government**

This only includes those administrative occupations essential to the effective delivery of the COVID-19 response or delivering essential public services such as the payment of benefits, including in government agencies and arms length bodies.

#### **Food and other necessary goods**

This includes those involved in food production, processing, distribution, sale and delivery as well as those essential to the provision of other key goods (for example hygienic and veterinary medicines).

#### **Public safety and national security**

This includes police and support staff, Ministry of Defence civilians, contractor and armed forces personnel (those critical to the delivery of key defence and national security outputs and essential to the response to the COVID-19 pandemic), fire and rescue service employees (including support staff), National Crime Agency staff, those maintaining border security, prison and probation staff and other national security roles, including those overseas.

#### **Transport**

This includes those who will keep the air, water, road and rail passenger and freight transport modes operating during the COVID-19 response, including those working on transport systems through which supply chains pass.

#### **Utilities, communication and financial services**

This includes staff needed for essential financial services provision (including but not limited to workers in banks, building societies and financial market infrastructure), the oil, gas, electricity and water sectors (including sewerage), information technology and data infrastructure sector and primary industry supplies to continue during the COVID-19 response, as well as key staff working in the civil nuclear, chemicals, telecommunications (including but not limited to network operations, field engineering, call centre staff, IT and data infrastructure, 999 and 111 critical services), postal services and delivery, payments providers and waste disposal sectors.

**If workers think they fall within the critical categories above they should confirm with their employer that, based on their business continuity arrangements, their specific role is necessary for the continuation of this essential public service.**

Some other key points to note are:

*Many parents working in these critical sectors may be able to ensure their child is kept at home. **Every child who can be safely cared for at home should be.***

***This is an offer** to parents and carers and there is no requirement for parents and carers to send their children to school if they do not need or wish to do so.*

*For vulnerable children, your child's social worker will work with you to assess the best option for your child.*